



LCCI PEARSON  
4<sup>th</sup> International English Language Competition  
**HIPPO 2016**

**HIPPO 3**  
preliminary round exam

JETSET (JET Version)

Listening

Level 3

This examination lasts approximately 20 minutes

---

**Instructions**

Do **not** open this paper until you are told to do so by the supervisor.

- You may **not** use a dictionary.
- Listen to each question carefully.
- Select the correct answer and then mark your selection on your answer sheet.
- Make sure you only mark **one** answer for each question.

## Part One

Read the questions, listen to the recording and select True (A) or False (B). Mark your answers on your answer sheet.

41. The woman's name is Carol.

**A = True      B = False**

42. Kevin wants to make an appointment.

**A = True      B = False**



43. Alex lives next door to Kevin.

**A = True      B = False**

44. Alex had a sore throat last night.

**A = True      B = False**

45. Dr Gordon is not at work because she is ill.

**A = True      B = False**

46. Alex is lucky to get an appointment so quickly.

**A = True      B = False**

47. Alex's full name is Alexander James Macbeth.

**A = True      B = False**

48. Kevin is older than Alex.

**A = True      B = False**

49. Alex was born on 4<sup>th</sup> January.

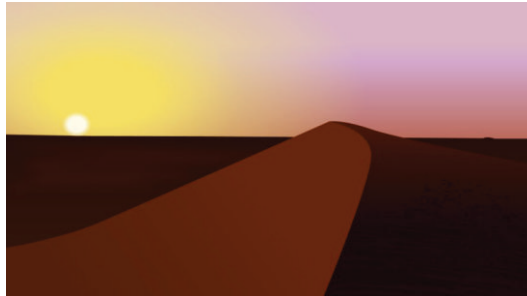
**A = True      B = False**

50. Alex is going to move house next month.

**A = True      B = False**

## Part Two

Read each question, listen to the recording and select the correct answer (A, B or C). Mark your answers on your answer sheet.



**51.** How much of Africa does the Sahara Desert cover?

- A** 9%
- B** 10%
- C** 12%

**52.** Which of these African countries is **NOT** listed?

- A** Chad
- B** Tunisia
- C** Sudan

**53.** How high is the tallest mountain in the Sahara?

- A** 133 metres
- B** over 3,000 metres
- C** over 30,000 metres

**54.** In which country is the lowest part of the Sahara?

- A** Algeria
- B** Egypt
- C** Libya

**55.** Another name for sand hills is sand

- A** domes
- B** junes
- C** dunes

## Part Two continued

- 56.** In the Sahara, you can also find areas of
- A** stone
  - B** rock
  - C** earth
- 57.** Grass in the Sahara is
- A** tall
  - B** thin
  - C** small
- 58.** How many kinds of large animal live in the Sahara?
- A** 20
  - B** 70
  - C** 500
- 59.** When was the Sahara covered in ice?
- A** 5,000 to 8,000 years ago
  - B** 8,000 to 10,000 years ago
  - C** 10,000 to 11,000 years ago
- 60.** What happened after the ice melted? There was
- A** no rain
  - B** light rain
  - C** heavy rain